

SEEK LOCATION MANAGER

Provides mobile control solutions for;-

✓ **People;-**

LOCATION MONITORING, SAFETY MONITORING, LONE WORKING, NEAREST PERSON, EMERGENCY CALL (SINGLE BUTTON), LOGIN- LOGOUT.

✓ **Vehicles;-**

MOVEMENT, OUT OF AREA, SPEED, LOCATION PLOTTING, ROUTING ADVICE. NEAREST VEHICLE.

✓ **Equipment.**

MOVEMENT, LOCATION. TEN STATUS INPUTS

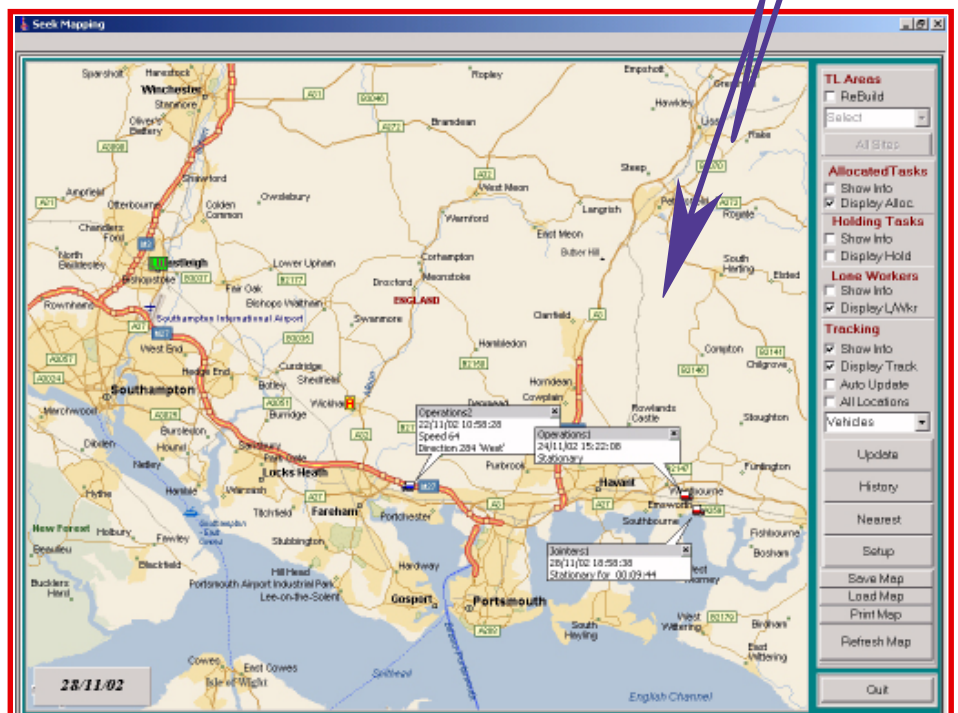
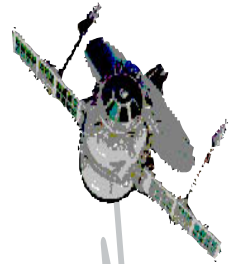
The system is based around a mobile telephone with a built in GPS satellite location receiver. The GPS information, location, speed, and direction is transmitted to a control location using SMS (Text messaging) as a data medium.

The whole system is enhanced with additional programmable intelligence built-in to the telephone (Telematics), this minimises the need for data transfer. Transfer only being necessary when your preset parameters that have been set-up in the telephone have been exceeded.

A button on the telephone handset provides a "Single push" emergency alarm. This provides an emergency signal together with the location of the sender.

For equipment or vehicle monitoring a 10 port interface unit can be fixed to the installation providing monitoring of up to 10 inputs to the system.

Lone Worker monitoring - this can be set to a single button operation with a call (SMS message) only being sent if the user fails to respond to the prompt. This can provide a considerable saving in costs over other methods.



SEEK LOCATION MANAGER

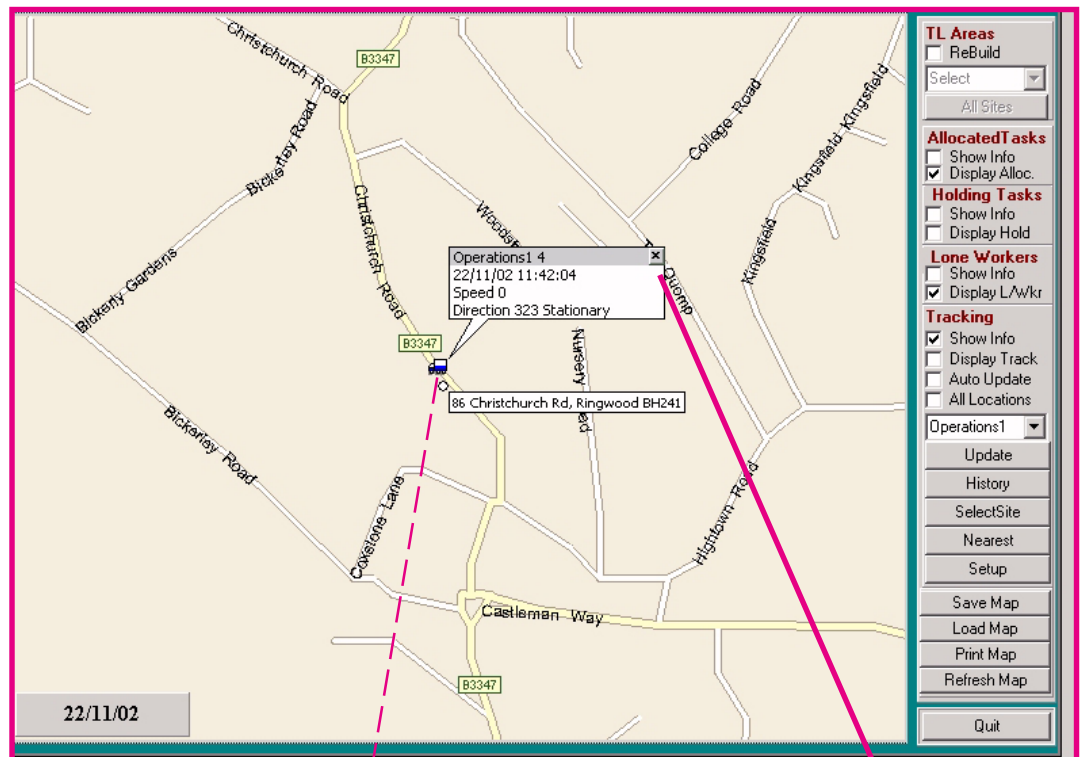
SOLUTIONS FOR MOBILE PEOPLE



We offer;

- Control and information for mobile tracking.
- Fast and effective control room management.
- Simple user interfaces.

Emergency fast response.
Preset monitoring of staff and vehicles.
Mobile telephone with GPS locates staff and vehicles.
Using SMS signalling, mobile transmits location and track information back to control.
Control monitors and displays locations on map displays.



Location manager can be setup to monitor various parameters. Such as; Logon conformity, movement, outside proscribed area, lone worker alarms.

Staff and vehicles can be continuously monitored without the need for the user to register through protracted key strokes or messages.

LOGIN / LOGOUT MONITOR

The user simply "Logs-on" to commence operations and then can be monitored for preset times requiring a simple keystroke to reset monitoring. **Using SMS allows for high traffic capacity for Logon monitoring.** If a refresh is not carried out then alarms can be raised and transmitted to the user and the controllers. A panic button is built in for immediate alarms, this together with the GPS location allows fast responses to the correct location.

PERSONAL MONITORING VIOLATION

Operations1 has not reported - see map for current position

Reason - 60 minute timeout has been exceeded

Comment

Close Incident OK



SEEK LOCATION MANAGER

VEHICLES CAN BE MONITORED BY;- MOVEMENT.

If a vehicle moves then an alarm can be raised.

Other parameters may be set, such as;

OUTSIDE PROSCRIBED AREA.

Moved outside an allowed geographical area.

FORBIDDEN LOCATION.

Geographical area that has been forbidden.

TRACKING.

Automatic or by request , This can give; Time, Position, direction and speed.

OPERATIONAL PARAMETERS.

Up to 10 monitored inputs.

VEHICLE MOVEMENT VIOLATION

Operations1 has MOVED- See map for current position

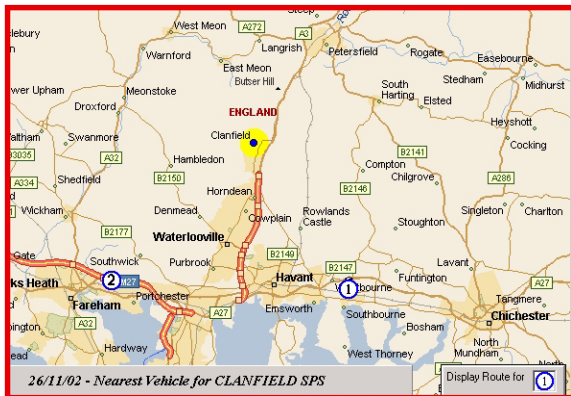
Reason - User not logged in

Sound Alarm in Cab Start Rapid Tracking

Comment

The above are only a selection, custom parameters may be setup to suit your requirements.

NEAREST RESOURCE



A search may be made to find the nearest vehicles / staff to any location, this is then displayed on the map.

The chosen vehicle can then be directed to the required location by direction generated by the location programme.

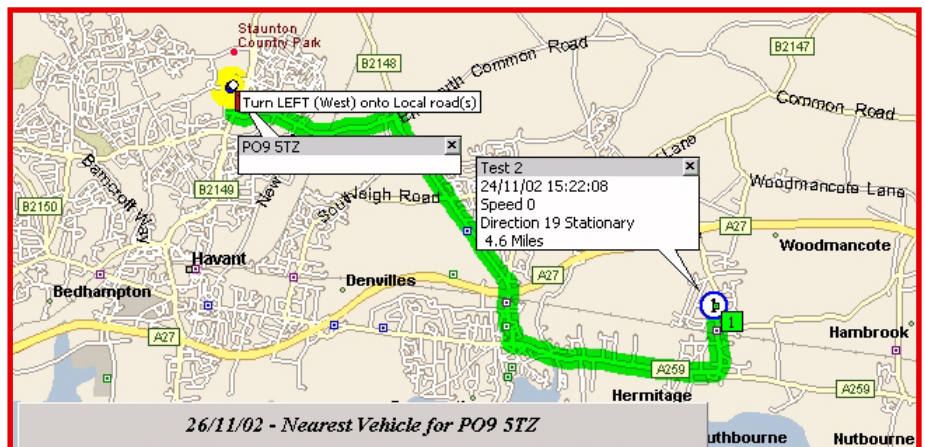
The example displayed below shows a route together with an estimate of the distance the two are apart allowing the controller to route efficiently.

For equipment or vehicle monitoring a 10 port interface unit can be fixed to the installation.

This can monitor up to 10 separate inputs to the system.

These could include -
Engine starting, Movement, speed.

The map display can offer a number of additional facilities such as routing to a location, as illustrated in the right.

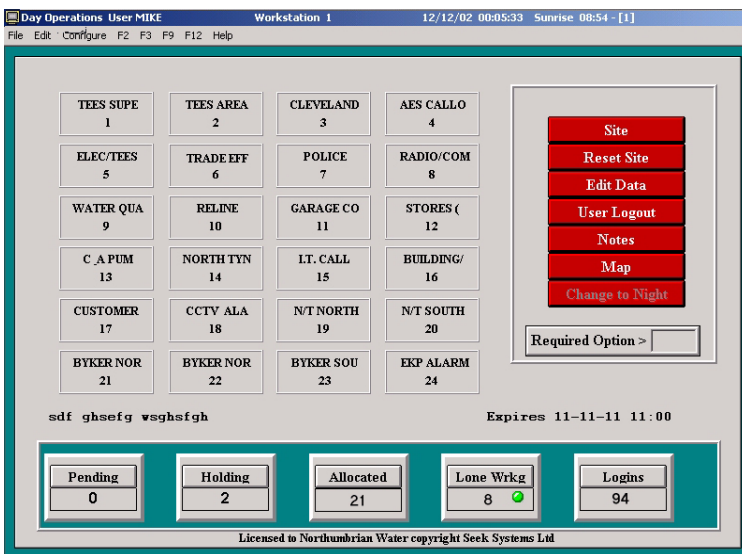


Parameters can be setup in the system to be monitored. Alarms will then only be sent if any action occurs that breaches those parameters. This will then send an alarm to the control centre, with the cause of the alarm together with the location any details as set-up.

SEEK LOCATION MANAGER

INTEGRATION

The location manager can be stand alone or integrated into Seek Task and Callout manager as shown below.



The example below shows a buffer monitoring Lone Workers (Lone Wrkg) plus a buffer monitoring staff logging in to a central control.

A sample of a login buffer are shown below; This can allow staff to login and out and be monitored for the login period, together with additional

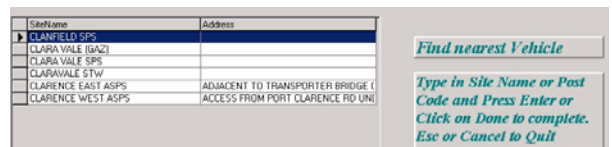
Logged in Users				
Name	Mobile	User ID	Login Time	Lone Worker
▶ FORTBURN W/T		0122	12/12/02 15:31:41	DeActivated
SOPRELL DAVE		0333	12/12/02 15:32:13	DeActivated
EVANS MIKE		0338	12/12/02 15:23:41	Activated
LUMLEY JOHN		0388	12/12/02 15:32:27	DeActivated
ABBOTT MICK		0423	12/12/02 15:33:02	DeActivated

geographical information as required.

Name	Mobile	Start Time	End Time	Monitor Type	Login Status	Login Time	Monitoring
▶ Operations1	07780943047	08:00	17:00	Vehicle - Times	Logged Off		
Operations2	07801731516			Vehicle - Login	Logged Off		
Joiners1	07760402950			Personel	Logged On 02:28		Active
Digger1	07803605201			Vehicle Radius			Active

Various other parameters may be monitored to provide the required coverage

If any staff need additional support then the system can locate the nearest staff and allow the controller to select the appropriate person and direct them to the required location.



CUSTOMISATION

Our design philosophy is based on operational experience. Our systems are tailored to suit needs of the customer and as they evolve and change. All our software is written "In-house" and this enables us to provide a system to suit you needs. We offer a fast and effective response to practical problems. We can provide configurations from a single work station to multi-stations on a wide area network. Intranet service can be linked to display information to remote desktops.

B and W ASSOCIATES

Web. www.bandwasssociates.co.uk

4 THE CREST, GOFFS OAK, WALTHAM CROSS, HERTS. EN7 5NP

Tel. 01707 874494 Fax 01707 872529

Email chris@Bandwassociates.co.uk

SEEK LOCATION MANAGER

Provides mobile control solutions for;-

✓ **People;-**

LOCATION MONITORING, SAFETY MONITORING, LONE WORKING, NEAREST PERSON, EMERGENCY CALL (SINGLE BUTTON), LOGIN- LOGOUT.

✓ **Vehicles;-**

MOVEMENT, OUT OF AREA, SPEED, LOCATION PLOTTING, ROUTING ADVICE. NEAREST VEHICLE.

✓ **Equipment.**

MOVEMENT, LOCATION. TEN STATUS INPUTS

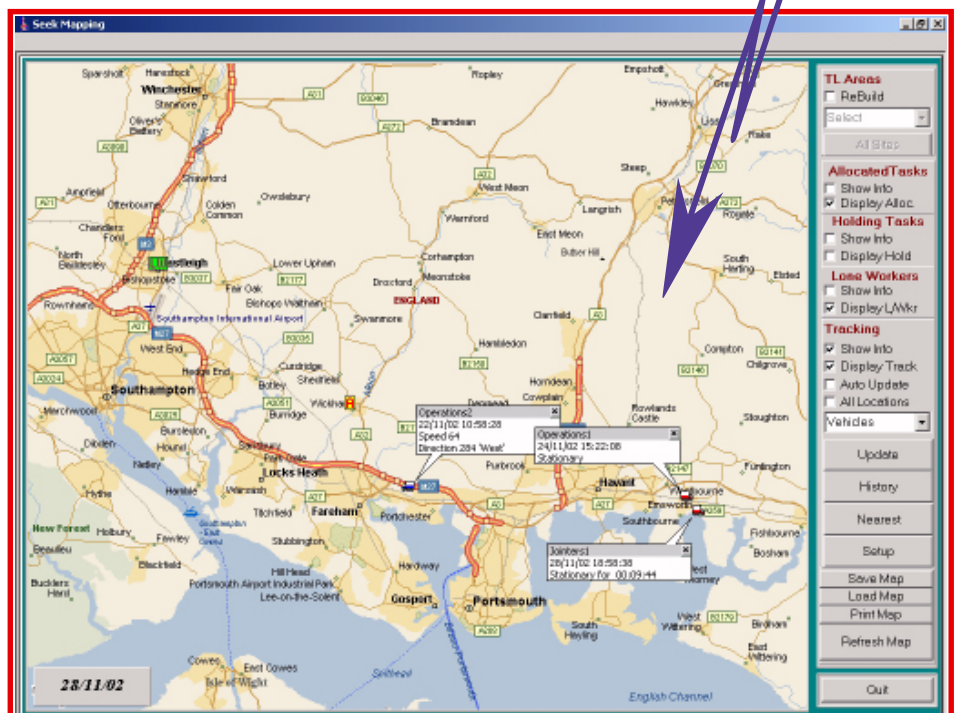
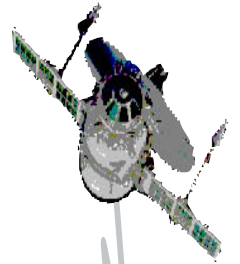
The system is based around a mobile telephone with a built in GPS satellite location receiver. The GPS information, location, speed, and direction is transmitted to a control location using SMS (Text messaging) as a data medium.

The whole system is enhanced with additional programmable intelligence built-in to the telephone (Telematics), this minimises the need for data transfer. Transfer only being necessary when your preset parameters that have been set-up in the telephone have been exceeded.

A button on the telephone handset provides a "Single push" emergency alarm. This provides an emergency signal together with the location of the sender.

For equipment or vehicle monitoring a 10 port interface unit can be fixed to the installation providing monitoring of up to 10 inputs to the system.

Lone Worker monitoring - this can be set to a single button operation with a call (SMS message) only being sent if the user fails to respond to the prompt. This can provide a considerable saving in costs over other methods.



SEEK LOCATION MANAGER

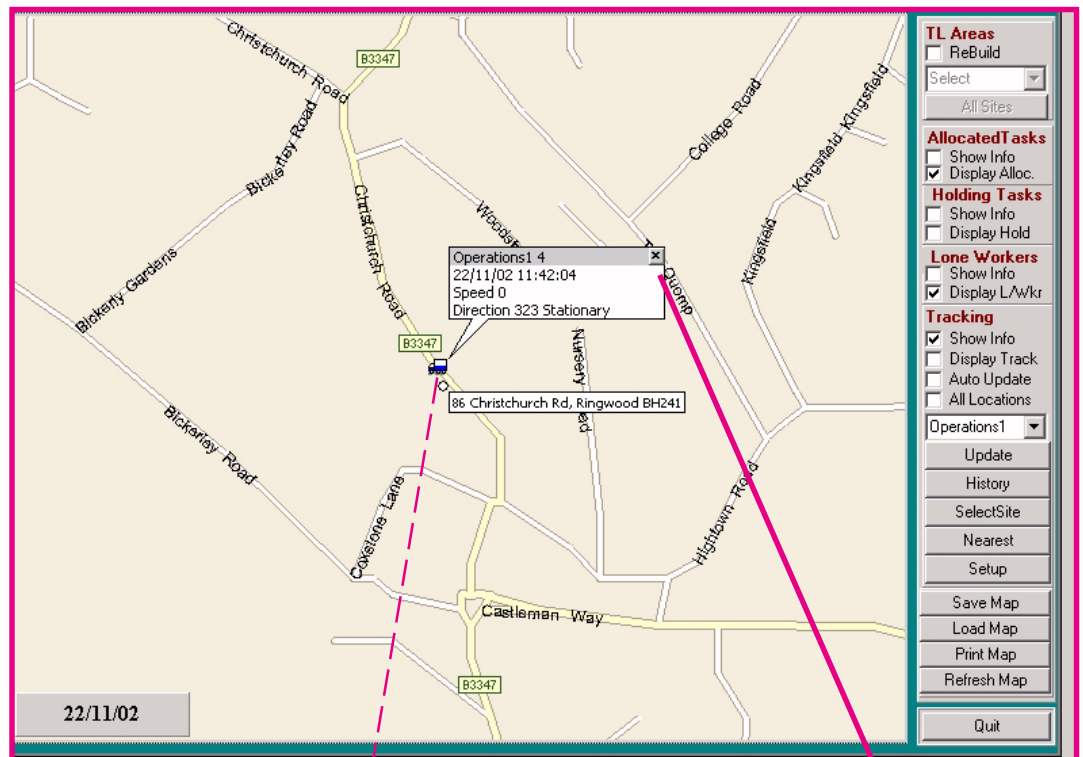
SOLUTIONS FOR MOBILE PEOPLE



We offer;

- Control and information for mobile tracking.
- Fast and effective control room management.
- Simple user interfaces.

Emergency fast response.
Preset monitoring of staff and vehicles.
Mobile telephone with GPS locates staff and vehicles.
Using SMS signalling, mobile transmits location and track information back to control.
Control monitors and displays locations on map displays.



Location manager can be setup to monitor various parameters. Such as; Logon conformity, movement, outside proscribed area, lone worker alarms.

Staff and vehicles can be continuously monitored without the need for the user to register through protracted key strokes or messages.

LOGIN / LOGOUT MONITOR

The user simply "Logs-on" to commence operations and then can be monitored for preset times requiring a simple keystroke to reset monitoring. **Using SMS allows for high traffic capacity for Logon monitoring.** If a refresh is not carried out then alarms can be raised and transmitted to the user and the controllers. A panic button is built in for immediate alarms, this together with the GPS location allows fast responses to the correct location.

PERSONAL MONITORING VIOLATION

Operations1 has not reported - see map for current position

Reason - 60 minute timeout has been exceeded

Comment

Close Incident OK



SEEK LOCATION MANAGER

VEHICLES CAN BE MONITORED BY;- MOVEMENT.

If a vehicle moves then an alarm can be raised.

Other parameters may be set, such as;

OUTSIDE PROSCRIBED AREA.

Moved outside an allowed geographical area.

FORBIDDEN LOCATION.

Geographical area that has been forbidden.

TRACKING.

Automatic or by request , This can give; Time, Position, direction and speed.

OPERATIONAL PARAMETERS.

Up to 10 monitored inputs.

VEHICLE MOVEMENT VIOLATION

Operations1 has MOVED- See map for current position

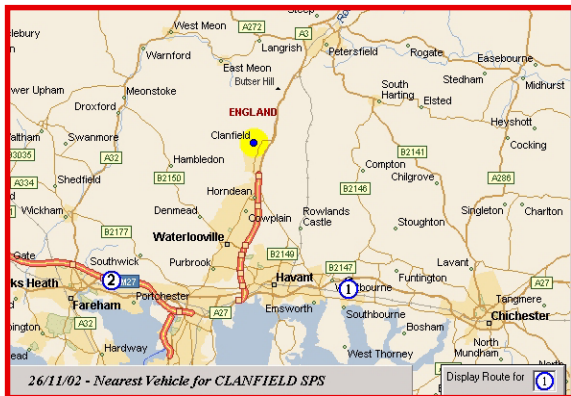
Reason - User not logged in

Sound Alarm in Cab Start Rapid Tracking

Comment

The above are only a selection, custom parameters may be setup to suit your requirements.

NEAREST RESOURCE



A search may be made to find the nearest vehicles / staff to any location, this is then displayed on the map.

The chosen vehicle can then be directed to the required location by direction generated by the location programme.

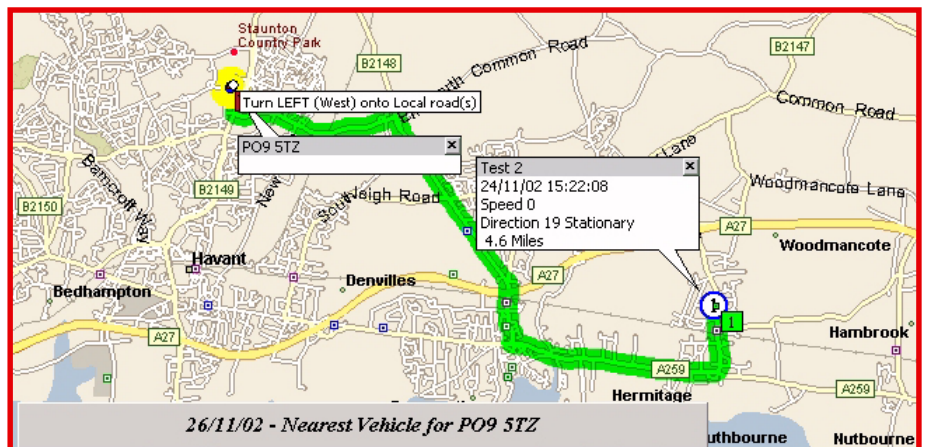
The example displayed below shows a route together with an estimate of the distance the two are apart allowing the controller to route efficiently.

For equipment or vehicle monitoring a 10 port interface unit can be fixed to the installation.

This can monitor up to 10 separate inputs to the system.

These could include -
Engine starting, Movement, speed.

The map display can offer a number of additional facilities such as routing to a location, as illustrated in the right.

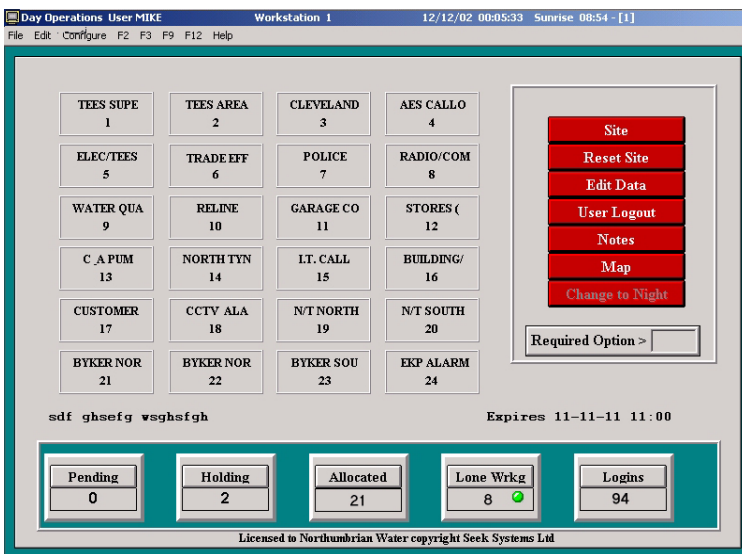


Parameters can be setup in the system to be monitored. Alarms will then only be sent if any action occurs that breaches those parameters. This will then send an alarm to the control centre, with the cause of the alarm together with the location any details as set-up.

SEEK LOCATION MANAGER

INTEGRATION

The location manager can be stand alone or integrated into Seek Task and Callout manager as shown below.



The example below shows a buffer monitoring Lone Workers (Lone Wrkg) plus a buffer monitoring staff logging in to a central control.

A sample of a login buffer are shown below; This can allow staff to login and out and be monitored for the login period, together with additional

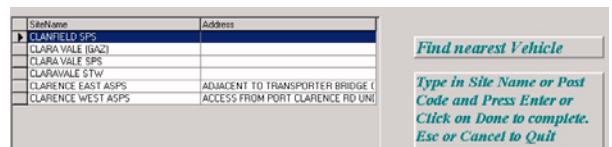
Logged in Users				
Name	Mobile	User ID	Login Time	Lone Worker
Fontburn W/T		0122	12/12/02 15:31:41	DeActivated
SORRELL DAVE		0333	12/12/02 15:32:13	DeActivated
EVANS MIKE		0338	12/12/02 15:23:41	Activated
LUMLEY JOHN		0388	12/12/02 15:32:27	DeActivated
ABBOTT MICK		0423	12/12/02 15:33:02	DeActivated

geographical information as required.

Name	Mobile	Start Time	End Time	Monitor Type	Login Status	Login Time	Monitoring
Operations1	07780943047	08:00	17:00	Vehicle - Times	Logged Off		
Operations2	07801731516			Vehicle - Login	Logged Off		
Joiners1	07760402950			Personel	Logged On	02:28	Active
Digger1	07803605201			Vehicle Radius			Active

Various other parameters may be monitored to provide the required coverage

If any staff need additional support then the system can locate the nearest staff and allow the controller to select the appropriate person and direct them to the required location.



CUSTOMISATION

Our design philosophy is based on operational experience. Our systems are tailored to suit needs of the customer and as they evolve and change. All our software is written "In-house" and this enables us to provide a system to suit you needs. We offer a fast and effective response to practical problems. We can provide configurations from a single work station to multi-stations on a wide area network. Intranet service can be linked to display information to remote desktops.

B and W ASSOCIATES

Web. www.bandwassociates.co.uk

4 THE CREST, GOFFS OAK, WALTHAM CROSS, HERTS. EN7 5NP

Tel. 01707 874494 Fax 01707 872529

Email chris@Bandwassociates.co.uk